



Slate Rock Floors
 bring the mountains inside
 with natural shades of amber,
 olive, burgundy and charcoal

If you prefer **top-quality construction** with materials meant to last a long time with little maintenance, then you must see this unique home. **Built in 2004**, it was owner-contracted to be **highly customized**. Add drama to your entry *and* entertaining with the 2-story living room surrounded by 790 sq ft of redwood decking. The slim iron railings leave the views open to the panoramic mountains, and the roof completely covers the deck, seeming to create three more rooms. Although kitchen, dining and living rooms flow openly into each other, they still feel like distinctly separate spaces. *See the floor plan >>*



**20700 Longview St.
 Unit 3, Lot 290**

**.95 Acre
 Forest Views**
See More >>



PineMtnLake.com

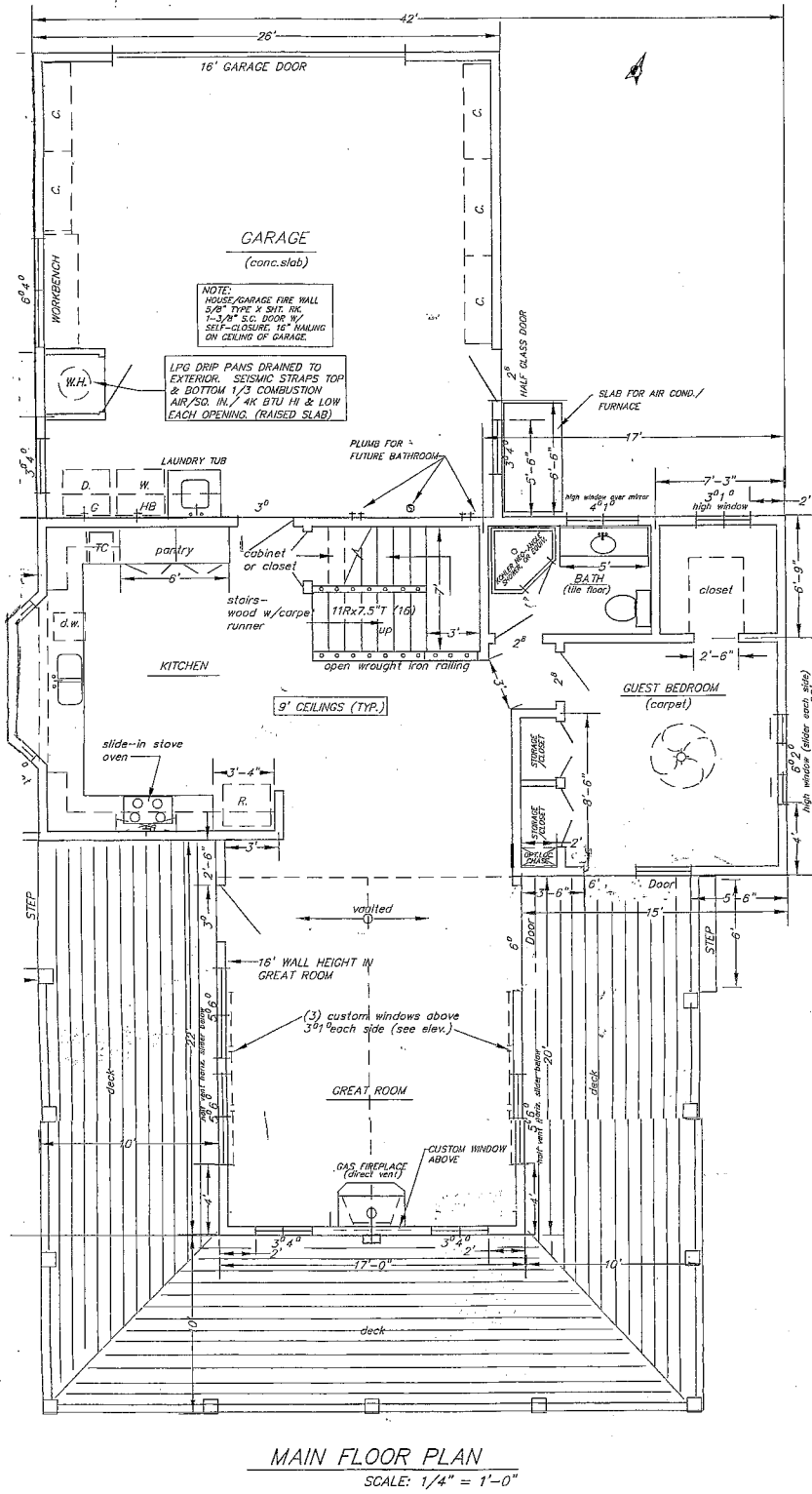
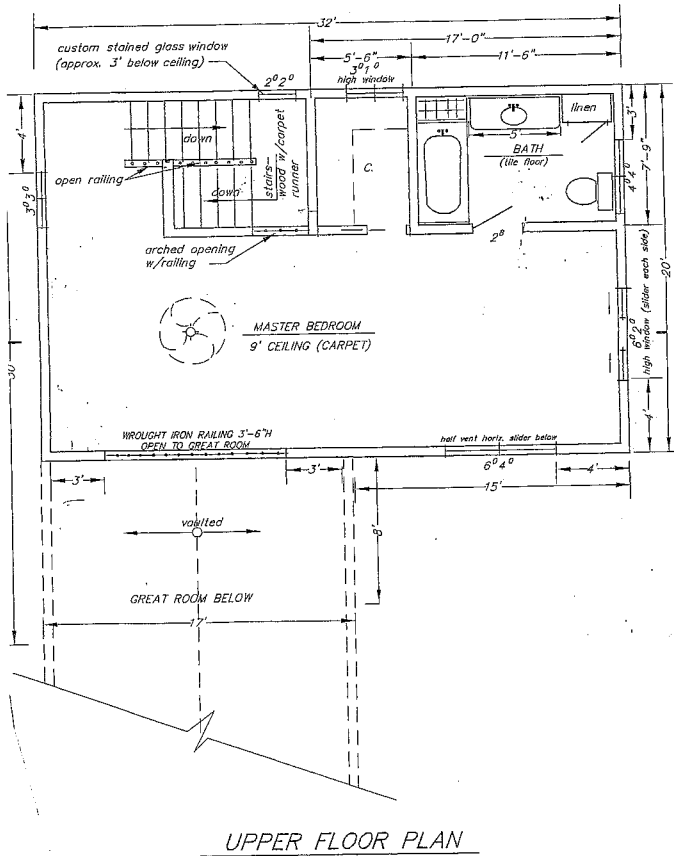
Your Mountain Dream... Above the Crowd

Lauree Borup, Broker, CRS, CRB, E-Pro, SRES, Green
 e-mail: Lauree@Goldrush.com

Phone: 209-962-4080
 Toll Free: 888-962-4080



20700
Longview St.
Floor
Plan





Deck Access to the deck is from two doors in the living room, and one door from the downstairs bedroom. These deck “rooms” face East, South, and West, so you can choose sun or shade depending on the season or time of day. Decking is “con-heart” redwood beautifully stained in clear reddish tones and free from knots. Two hose bibs allow for container gardening. Railings are black cast iron for low maintenance and best views.



Windows of Milgard brand high up in the 16 foot tall living room allow for sky and cloud watching and bring bright light in. The “woodstove” look-a-like sets on a slate rock hearth with stacked rock surround.



Construction Fiber cement siding is Hardi-Plank lap in a rough-cut shake design with a 50-year warranty.

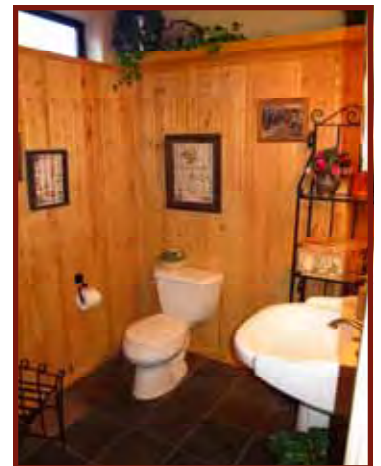
Rock accents the lower walls along the walkway to the front door.

Metal roof brand is Norclad with a 50 year expected life and 25-year warranty. It is layered with a zinc-aluminum alloy.

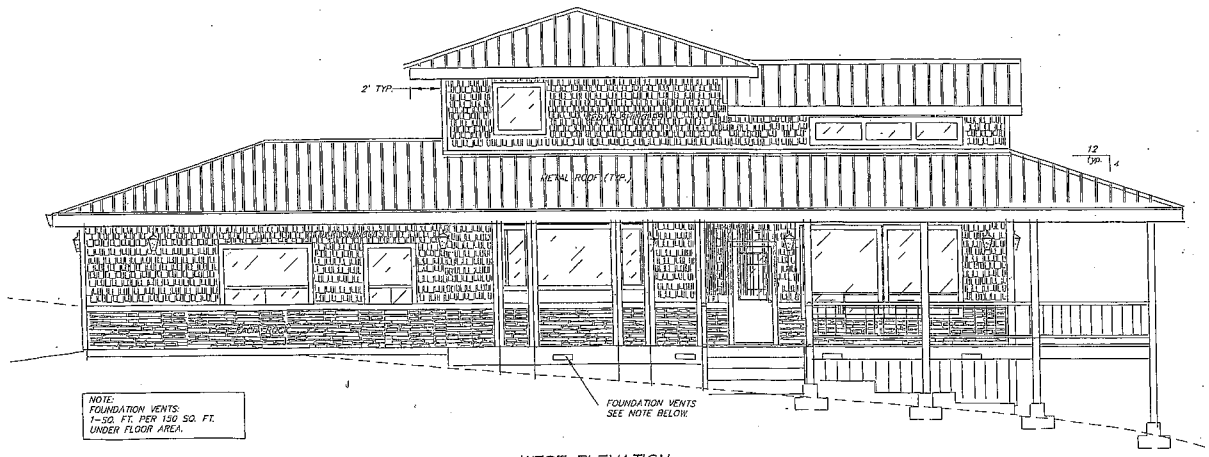
All walls are 2 X 6 thick, and interior walls are insulated for sound-damping. Ceilings are 9 feet high.



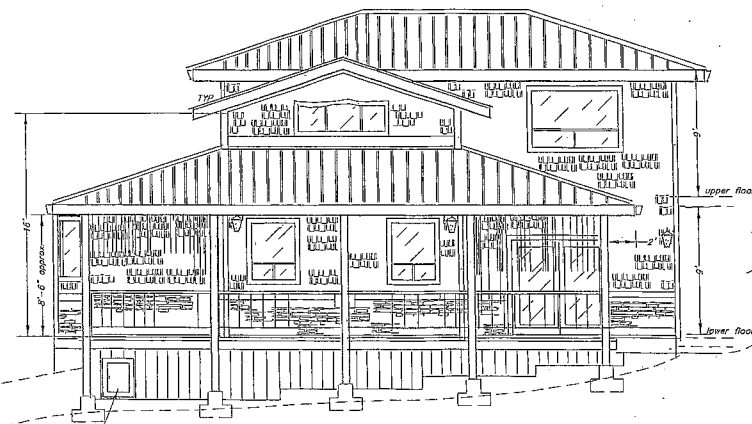
Master Bathroom



Bathroom 2



WEST ELEVATION

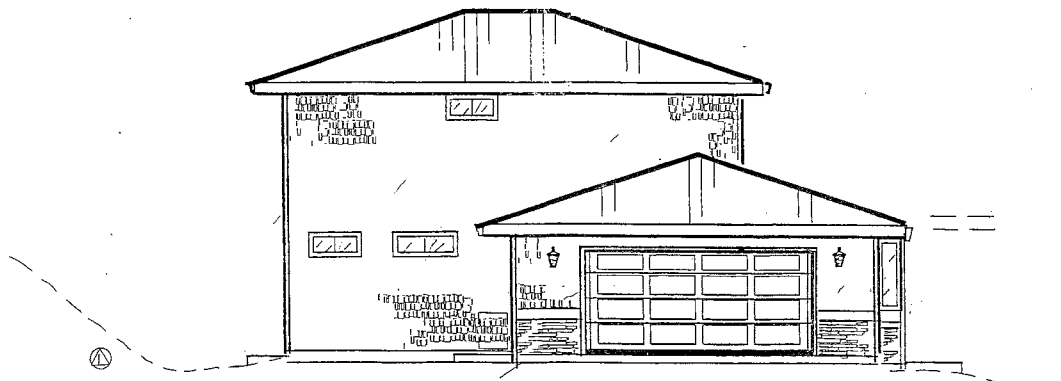


SOUTH ELEVATION

20700
Longview St.
Elevations



EAST ELEVATION



NORTH ELEVATION

20700 Longview Street

.....More Details

View and Location On .95 acre upslope, set high above the street and neighboring properties so your view of the surrounding forested ridges cannot be impeded. Underground power lines between the street and the house. The house faces Southwest for a sunny aspect. Longview is a quiet street with very limited vehicle use.

Kitchen Stainless Maytag refrigerator, free-standing Maytag electric stove with smaller top oven and full-size bottom oven. Microwave over stove. Tile counters are thicker floor-type and sealed several times. Bay window over stainless steel sink with instant hot water. Cabinet pantry plus closet pantry. Opens to garage with no stairs for easy unloading of groceries. Kraftmaid birch cabinets in a warm medium stain. A low table and bench in the center of the room could be replaced with a movable, higher chopping table with stools, or a butcher block island.

Main Level Bedroom and Bathroom The bathroom adjacent to the second bedroom features knotty stained beadboard paneling, slate rock floor, a corner shower, and pedestal sink. The bedroom has a walk-in closet, alcove work area, and sliding door access to the deck.

Master suite upstairs with curved iron balcony overlooking two-story living room. The 9-foot ceilings and windows on all four walls add to the open feeling. This room is 31 feet long and 12 feet wide and designed so that you could divide it with a wall and have a separate office or sleeping area next to the remaining 17' X 12' master bedroom.

Bathroom counters and tub surround are tile, and the tile floors are exquisitely detailed with pebble strips. Kohler soaking bathtub with handheld shower. Plenty of storage in birch cabinets

Flooring Berber carpet in bedrooms and center of living room is of a neutral hue to match either warm or cool color décor. Durable slate rock in 12 inch squares of natural shades of amber, olive, gold, charcoal and burgundy.

Garage is 26 feet X 26 feet and the interior door opens to the kitchen and pantry area. Cabinets on two walls, laundry hookups and large sink. Fully insulated, dry-walled and painted, this garage could be converted to living space. Plumbing is already in the concrete slab to add a third bathroom. Two windows face West, and one faces East. Level asphalt paved parking area in front of attached garage.

Storage Under the living room is a large storage area that could accommodate tall ceilings if it was developed as a shop, hobby room, or finished storage.

Landscaping Hand-laid rock walkway from parking area to front porch, made of slate. Horseshoe pits in back. Planted tree types are liquidamber and Chinese pistache. Also planted: iris, lilies, lavender and rosemary with drip watering system on timers. All trees and shrubs were planted with wire baskets to keep gophers out. Natural evergreen oaks provide shade behind the house.

Energy Propane forced air heat and electric air conditioning. Vermont Castings electric stove on stacked rock hearth in living room can be used for heat- just turn on the circulating fan. Ceiling fans in each bedroom. Propane water heater holds 86 gallons and has a circulating system that gives you immediate hot water at plumbing fixtures. Water pipes and heating ducts are all wrapped with insulation to conserve energy and prevent freeze damage. Garage and limited window glazing on the North side protects the home from "cold side" heat loss.

Extra Features Electric outlets along eaves over deck for easily putting up Christmas lights. All HVAC ducts have filters in the vents to keep house cleaner. Hunter ceiling fans and Panasonic exhaust fans. Interior doors are solid core. Distinctive hardware is copper plate. On GCSD public sewer.

Pine Mountain Lake