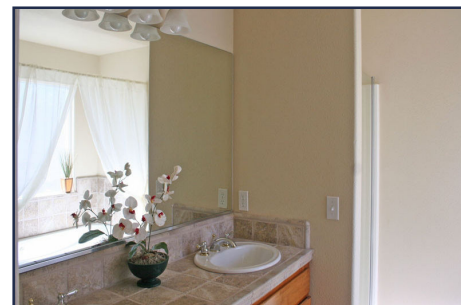
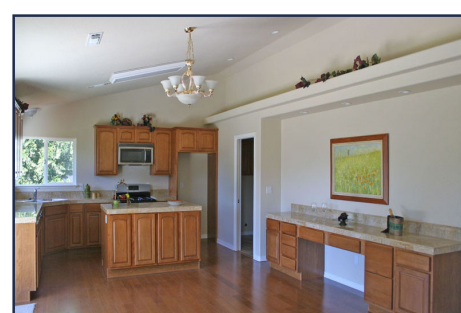




20515 Nob Hill Circle Unit 3 Lot 125

Quality custom home built in 2005 on a rare level lot in the Yosemite Foothills. Located near PML Fisherman's Cove, tennis courts and walking trail. Bright floor plan with great natural light throughout. Fine interior and exterior finishes add distinction and architectural interest. The large backyard has a stamped concrete patio, spacious lawn and trees planted around the perimeter that will fill in and offer privacy.

- 1700 Sq Ft Single Level "Step-Free" Floor Plan
- Built-In Cabinetry With Granite Tile Counter Tops
- Decorative Pot Shelves
- Master Suite With Private Bath
- Impressive Tile Foyer



RE/MAX Yosemite Gold

Eleda Carlson or
(Miriam Martin, Lic Asst)
REALTOR, GRI, SRES, E-Pro
209-962-4080 (Office)
209-814-4123 (Cellular)
eledac@goldrush.com
www.ecarlson.com

RE/MAX 
Outstanding Agents.
Outstanding Results.®



©2008 Imprev, Inc.

Info deemed reliable but not guaranteed

RE/MAX Yosemite Gold

PO Box 808
Groveland, CA 95321